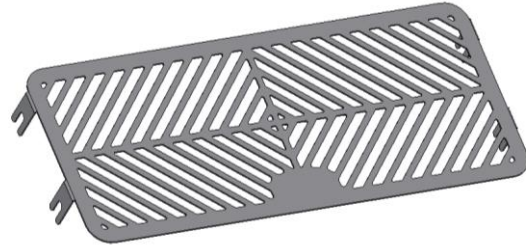




**FITTING INSTRUCTIONS FOR SRG0065 RADIATOR GUARD**  
**HONDA CB300R 2018 –**



**THIS KIT CONTAINS THE ITEMS PICTURED AND LABELLED BELOW.**  
**DO NOT PROCEED UNTIL YOU ARE SURE ALL PARTS ARE PRESENT.**

Please note that the way the kit is packed does not necessarily represent the way of mounting to the bike

Please note that in cases where kits are packed with rubber washers holding the components onto the bolt – *the rubber washers should be thrown away!*

THE PARTS SHOWN MAY BE REPRESENTATIVE ONLY (FOR CLARITY OF INSTRUCTIONS ONLY)

Digital copies of these instructions are available to download from [www.rg-racing.com](http://www.rg-racing.com)

**GENERAL TORQUE SETTINGS**

- M4 BOLT = 8Nm
- M5 BOLT = 12Nm
- M6 BOLT = 15Nm
- M8 BOLT = 20Nm
- M10 BOLT = 40Nm

**TOOLS REQUIRED**

- 5mm Allen key

**THIS KIT CONTAINS**

- 1 x SS Radiator Guard (SS RAD0065)
- 2 x 100mm Lengths of self-adhesive foam
- 1 x SS RAD PLATE (R&G ADVENTURE LOGO PLATE)
  - 2 x SMALL STICKERS (RGS0002)
  - 2 x BUBBLE STICKERS (RGS0005)

R&G

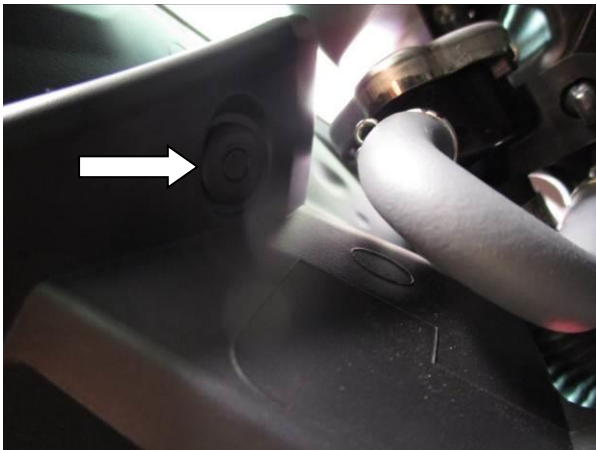
Unit 1, Shelley's Lane, East Worldham, Alton, Hampshire, GU34 3AQ  
Tel: +44 (0)1420 89007 Fax: +44 (0)1420 87301 [www.rg-racing.com](http://www.rg-racing.com) Email: [info@rg-racing.com](mailto:info@rg-racing.com)



Picture 1



Picture 2



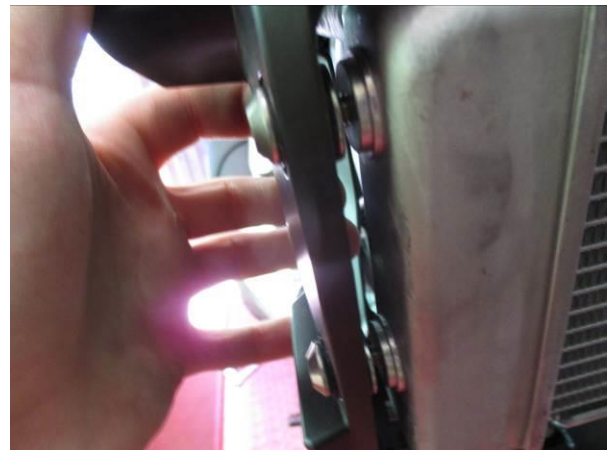
Picture 3



Picture 4



Picture 5



Picture 6



Picture 7



Picture 8



Picture 9

### **FITTING INSTRUCTIONS**

- To fit the radiator guard to the bike, cut the foam strip provided into 10mm wide pieces and stick them to the back of the radiator guard frame, so that they sit between the radiator guard and the radiator (please space these evenly all around the radiator guard frame as they prevent the guard coming into contact with the radiator).
- Remove the allen bolt on the RHS of the bike, highlighted in Picture 1.
- Locate and remove the plastic push rivet on the rear of the panel, shown in Pictures 2 and 3, by pushing in the centre of the rivet to release it.
- Carefully remove the plastic fairing panel, by gently pulling it to release the fastener shown in Picture 4.
- Repeat the previous steps on the other side of the bike.
- With the radiator exposed, loosen the two bolts shown in Picture 5, to allow 3mm clearance between the radiator and the fairing, shown in Picture 6.
- Repeat the previous step on the other side of the bike.
- Offer the radiator guard into position, ensuring the four mounting tabs sit over the bolts, and secure the radiator guard in place by tightening the four bolts back up to the correct torque.
- Refit both fairing panels.

R&G

Unit 1, Shelley's Lane, East Worldham, Alton, Hampshire, GU34 3AQ

Tel: +44 (0)1420 89007 Fax: +44 (0)1420 87301 [www.rg-racing.com](http://www.rg-racing.com) Email: [info@rg-racing.com](mailto:info@rg-racing.com)



ISSUE 1 01/10/2018 (LF)

**CONSUMER NOTICE**

The catalogue description and any exhibition of samples are only broad indications of the Products and R&G may make design changes which do not diminish their performance or visual appeal and supplying them in such state shall conform to the order. The Buyer acknowledges no representation or warranty (other than as to title) has been given or will apply to the Products other than those in R&G's order or confirmation and the Buyer confirms it has chosen the Products as being of merchantable quality and suitable for its particular purposes. Where R&G fits the Products or undertakes other services it shall exercise reasonable skill and care and rectify any fault free of charge unless the workmanship has been disturbed. The Buyer is responsible for ensuring that the warranty on the motorcycle is not affected by the fitting of the Products. On return of any defective Products R&G shall at its option either supply a replacement or refund the purchase money but shall not be liable if the Products have been modified or used or maintained otherwise than in accordance with R&G's or manufacturer's instructions and good engineering practice or if the defect arises from accident or neglect. Other than identified above and subject to R&G not limiting its liability for causing death and personal injury, it shall not be liable for indirect or consequential loss and otherwise its liability shall be limited to the amounts paid by the Buyer for the Products or the fitting or service concerned. These terms do not affect the Buyer's statutory rights.

**R&G RACING RETURNS POLICY (NON-FAULTY GOODS)**

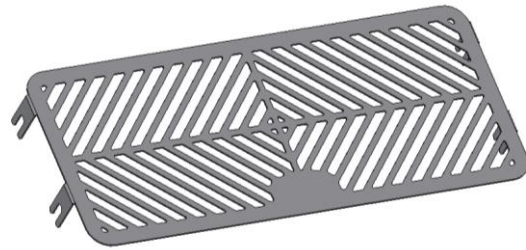
Returns must be pre-authorized (if not pre-authorized the return will be rejected). Goods may only be returned direct to us if they were purchased direct from us (customer must prove if necessary). Otherwise to be returned to original vendor. Goods must be in re-sellable condition, in the opinion of R&G Racing. All returns are subject to a 25% restocking and handling fee (25% of the gross value exc. P&P – at the prevailing price at time of purchase). The customer must pay any and all carriage charges. No returns of discontinued products, unless within 14 days of purchase. This policy does not affect your statutory rights and does not refer to faulty goods.

R&amp;G

Unit 1, Shelley's Lane, East Worldham, Alton, Hampshire, GU34 3AQ  
Tel: +44 (0)1420 89007 Fax: +44 (0)1420 87301 [www.rg-racing.com](http://www.rg-racing.com) Email: [info@rg-racing.com](mailto:info@rg-racing.com)



**NOTICE DE MONTAGE POUR SRG0065**  
**GRILLE DE PROTECTION RADIATEUR**  
**HONDA CB300R 2018 –**



**Le kit contient les articles exposés ci-dessous, vérifier que toutes les pièces soient présentes avant de procéder au montage.**

La façon dont le kit est emballé ne correspond pas forcément à la façon de monter les pièces sur la moto.

Notez que si les kits sont emballés avec des rondelles en caoutchouc servant à tenir les composants, *ces rondelles doivent être jetées !*

**LES PARTIES PRÉSENTÉES PEUVENT ÊTRE UNIQUEMENT REPRESENTATIVES (POUR LA CLARTE DES INSTRUCTIONS UNIQUEMENT)**

**Notice disponible au téléchargement sur [www.rg-racing.com](http://www.rg-racing.com)**

**VALEURS DE SERRAGE RECOMMANDÉES**

M4 BOULON = 8Nm  
M5 BOULON = 12Nm  
M6 BOULON = 15Nm  
M8 BOULON = 20Nm  
M10 BOULON = 40Nm

**OUTILS REQUIS**

- Clé Allen 5mm

**Le kit doit contenir :**

- 1 x Grille de protection radiateur (SS RAD0065).
- 2 x 100mm Longueurs de mousse autocollante
  - SS PLAQUE RAD – Sticker Adventure
    - 2 x RGS0005 Stickers en caoutchouc
    - 2 x RGS0002 Petits stickers

R&G

Unit 1, Shelley's Lane, East Worldham, Alton, Hampshire, GU34 3AQ  
Tel: +44 (0)1420 89007 Fax: +44 (0)1420 87301 [www.rg-racing.com](http://www.rg-racing.com) Email: [info@rg-racing.com](mailto:info@rg-racing.com)



Photo 1



Photo 2

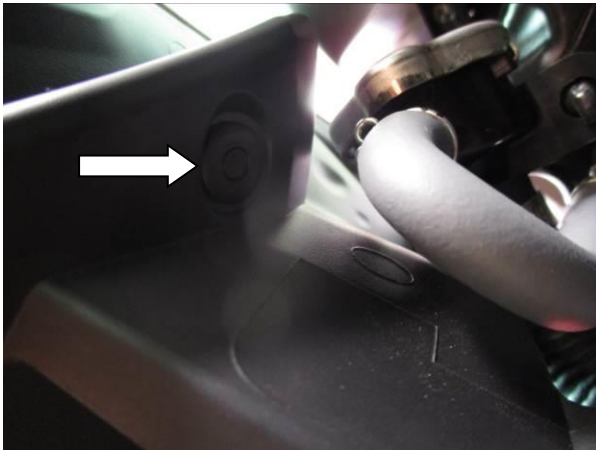


Photo 3



Photo 4



Photo 5



Photo 6



Photo 7



Photo 8



Photo 9

## **NOTICE DE MONTAGE**

- Pour monter la grille de protection radiateur sur la moto, couper la mousse en bandeaux de 10mm puis collez les au bas du cadre de protection radiateur, de façon à ce que ces bandeaux se placent entre la grille de protection radiateur et le radiateur (Espacez les de façon identique tout autour du cadre de protection radiateur afin qu'ils évitent la protection de toucher le radiateur).
- Enlever le boulon du côté droit de la moto, voir Photo 1.
- Placer puis enlever le rivet à l'arrière du carénage, voir Photos 2 et 3, en le poussant au centre pour le libérer.
- Enlever le carénage, en tirant l'attache, voir Photo 4.
- Répéter les étapes précédentes de l'autre côté de la moto.
- Une fois le radiateur exposé, desserrer les 2 boulons indiqués sur la Photo 5, pour laisser 3mm d'espace entre le radiateur et le carénage, voir Photo 6.
- Répéter l'étape précédente de l'autre côté de la moto.
- Monter la grille de protection radiateur en position, en veillant à ce que les 4 onglets de fixation se placent sur les boulons, puis fixer la grille de protection radiateur en place en serrant les 4 boulons aux valeurs de serrage recommandées.
- Remonter les 2 carénages.

R&G

Unit 1, Shelley's Lane, East Worldham, Alton, Hampshire, GU34 3AQ  
 Tel: +44 (0)1420 89007 Fax: +44 (0)1420 87301 [www.rg-racing.com](http://www.rg-racing.com) Email: [info@rg-racing.com](mailto:info@rg-racing.com)



ISSUE 1 01/10/2018 (LF)

**CONSUMER NOTICE**

The catalogue description and any exhibition of samples are only broad indications of the Products and R&G may make design changes which do not diminish their performance or visual appeal and supplying them in such state shall conform to the order. The Buyer acknowledges no representation or warranty (other than as to title) has been given or will apply to the Products other than those in R&G's order or confirmation and the Buyer confirms it has chosen the Products as being of merchantable quality and suitable for its particular purposes. Where R&G fits the Products or undertakes other services it shall exercise reasonable skill and care and rectify any fault free of charge unless the workmanship has been disturbed. The Buyer is responsible for ensuring that the warranty on the motorcycle is not affected by the fitting of the Products. On return of any defective Products R&G shall at its option either supply a replacement or refund the purchase money but shall not be liable if the Products have been modified or used or maintained otherwise than in accordance with R&G's or manufacturer's instructions and good engineering practice or if the defect arises from accident or neglect. Other than identified above and subject to R&G not limiting its liability for causing death and personal injury, it shall not be liable for indirect or consequential loss and otherwise its liability shall be limited to the amounts paid by the Buyer for the Products or the fitting or service concerned. These terms do not affect the Buyer's statutory rights.

**R&G RACING RETURNS POLICY (NON-FAULTY GOODS)**

Returns must be pre-authorized (if not pre-authorized the return will be rejected). Goods may only be returned direct to us if they were purchased direct from us (customer must prove if necessary). Otherwise to be returned to original vendor. Goods must be in re-sellable condition, in the opinion of R&G Racing. All returns are subject to a 25% restocking and handling fee (25% of the gross value exc. P&P – at the prevailing price at time of purchase). The customer must pay any and all carriage charges. No returns of discontinued products, unless within 14 days of purchase. This policy does not affect your statutory rights and does not refer to faulty goods.

R&amp;G

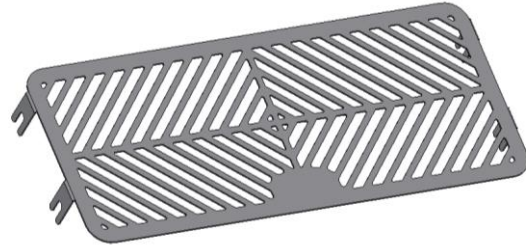
Unit 1, Shelley's Lane, East Worldham, Alton, Hampshire, GU34 3AQ

Tel: +44 (0)1420 89007 Fax: +44 (0)1420 87301 [www.rg-racing.com](http://www.rg-racing.com) Email: [info@rg-racing.com](mailto:info@rg-racing.com)





**MONTAGEANLEITUNG FÜR SRG0065 KÜHLERSCHUTZ**  
**HONDA CB300R 2018 –**



**ALLE KIT-TEILE SIND UNTEN ABGEBILDET UND GEKENNZEICHNET. BEVOR SIE MIT DER MONTAGE BEGINNEN, ÜBERPRÜFEN SIE, DASS ALLE TEILE VORHANDEN SIND.**

**Hinweis: Die Verpackung der Teile stellt nicht die Reihenfolge der Montage dar.**

Hinweis für Kits mit Plastikunterlegscheiben an den Schrauben – *Diese Plastikunterlegscheiben werden nicht für den Einbau benötigt!*

DIE UNTEN ABGEBILDETEN TEILE DIENEN LEDIGLICH ZUR ERKLÄRUNG

**Eine digitale Version dieser Montageanleitung kann auf folgender Seite heruntergeladen werden:**

[www.rg-racing.com](http://www.rg-racing.com)

**ANZUGSDREHMOMENT**

M4 SCHRAUBE = 8Nm  
M5 SCHRAUBE = 12Nm  
M6 SCHRAUBE = 15Nm  
M8 SCHRAUBE = 20Nm  
M10 SCHRAUBE = 40Nm

**SIE BENÖTIGEN FOLGENDES WERKZEUG**

- 5mm Inbusschlüssel

**Dieser Kit beinhaltet:**

- 1x Kühlerschutz (SS RAD0065)
- 2x 100mm selbstklebende Schaumstoffstreifen
  - 1 x R&G Adventure Logo Platte
  - 2 x kleine Aufkleber (RGS0002)
  - 2 x Bubble-Aufkleber (RGS0005)

R&G

Unit 1, Shelley's Lane, East Worldham, Alton, Hampshire, GU34 3AQ  
Tel: +44 (0)1420 89007 Fax: +44 (0)1420 87301 [www.rg-racing.com](http://www.rg-racing.com) Email: [info@rg-racing.com](mailto:info@rg-racing.com)



Abbildung 1



Abbildung 2

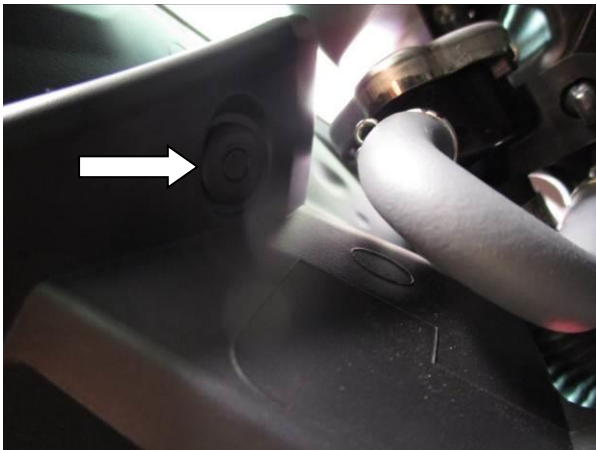


Abbildung 3



Abbildung 4



Abbildung 5

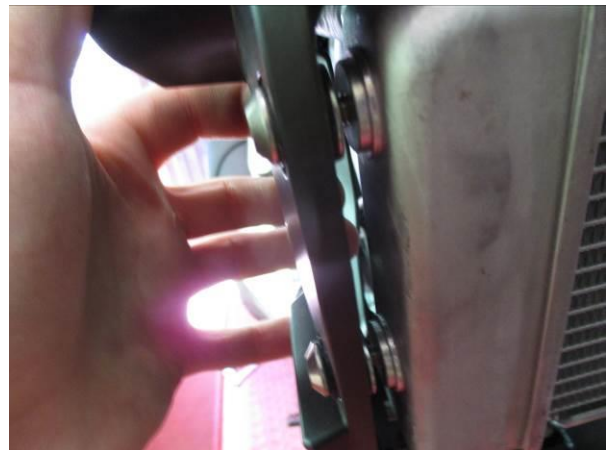


Abbildung 6



Abbildung 7



Abbildung 8



Abbildung 9

### MONTAGEANLEITUNG

- Um den Kühlerschutz am Motorrad montieren zu können, schneiden Sie zuerst die mitgelieferten Schaumstoffstreifen in 10 mm breite Stücke und kleben Sie diese auf der Rückseite des Kühlerschutzrahmens (bitte gleichmäßig um den Kühlerschutzrahmen platzieren, sodass der Kühlerschutz den Kühler nicht berührt).
- Entfernen Sie die Inbusschrauben an der rechten Seite des Motorrades – siehe Abbildung 1.
- Entfernen Sie die Plastikniete hinten am Verkleidungsteil – siehe Abbildungen 2 und 3 – indem Sie sie mittig eindrücken, um sie zu lösen.
- Entfernen Sie die Seitenverkleidung aus Kunststoff, indem Sie sie vorsichtig rausziehen, um den Verschluss zu lösen – siehe Abbildung 4.
- Die vorherigen Schritte an der anderen Seite des Motorrades wiederholen.
- Der Kühler ist nun freigelegt. Lösen Sie die zwei Schrauben, die in Abbildung 5 abgebildet sind, um 3mm Abstand zwischen dem Kühler und der Verkleidung zu bekommen (siehe Abbildung 6).
- Diesen Schritt an der anderen Seite des Motorrades wiederholen.
- Den R&G Kühlerschutz in Position bringen – bitte darauf achten, dass die vier Montagelaschen über den Schrauben sind, und den Kühlerschutz in Position sichern, indem Sie die vier Schrauben mit dem richtigen Anzugsdrehmoment wieder festziehen.
- Montieren Sie beide Seitenverkleidungen wieder.

R&G

Unit 1, Shelley's Lane, East Worldham, Alton, Hampshire, GU34 3AQ  
 Tel: +44 (0)1420 89007 Fax: +44 (0)1420 87301 [www.rg-racing.com](http://www.rg-racing.com) Email: [info@rg-racing.com](mailto:info@rg-racing.com)



AUSGABE 1 01/10/2018 (LF)

**CONSUMER NOTICE**

The catalogue description and any exhibition of samples are only broad indications of the Products and R&G may make design changes which do not diminish their performance or visual appeal and supplying them in such state shall conform to the order. The Buyer acknowledges no representation or warranty (other than as to title) has been given or will apply to the Products other than those in R&G's order or confirmation and the Buyer confirms it has chosen the Products as being of merchantable quality and suitable for its particular purposes. Where R&G fits the Products or undertakes other services it shall exercise reasonable skill and care and rectify any fault free of charge unless the workmanship has been disturbed. The Buyer is responsible for ensuring that the warranty on the motorcycle is not affected by the fitting of the Products. On return of any defective Products R&G shall at its option either supply a replacement or refund the purchase money but shall not be liable if the Products have been modified or used or maintained otherwise than in accordance with R&G's or manufacturer's instructions and good engineering practice or if the defect arises from accident or neglect. Other than identified above and subject to R&G not limiting its liability for causing death and personal injury, it shall not be liable for indirect or consequential loss and otherwise its liability shall be limited to the amounts paid by the Buyer for the Products or the fitting or service concerned. These terms do not affect the Buyer's statutory rights.

**R&G RACING RETURNS POLICY (NON-FAULTY GOODS)**

Returns must be pre-authorized (if not pre-authorized the return will be rejected). Goods may only be returned direct to us if they were purchased direct from us (customer must prove if necessary). Otherwise to be returned to original vendor. Goods must be in re-sellable condition, in the opinion of R&G Racing. All returns are subject to a 25% restocking and handling fee (25% of the gross value exc. P&P – at the prevailing price at time of purchase). The customer must pay any and all carriage charges. No returns of discontinued products, unless within 14 days of purchase. This policy does not affect your statutory rights and does not refer to faulty goods.

R&amp;G

Unit 1, Shelley's Lane, East Worldham, Alton, Hampshire, GU34 3AQ

Tel: +44 (0)1420 89007 Fax: +44 (0)1420 87301 [www.rg-racing.com](http://www.rg-racing.com) Email: [info@rg-racing.com](mailto:info@rg-racing.com)